

R&S®SFE / SFE100

Broadcast Tester / Test Transmitter

Release Notes

Firmware Version 02.60

© 2012 Rohde & Schwarz GmbH & Co. KG
81671 Munich, Germany

Printed in Germany – Subject to change – Data without tolerance limits is not binding.

R&S® is a registered trademark of Rohde & Schwarz GmbH & Co. KG.

Trade names are trademarks of the owners.

The following abbreviations are used throughout this document:

R&S®SFE / SFE100 is abbreviated as R&S SFE / SFE100.

Table of Contents

1	Information on the Current Version and History	3
1.1	Version 02.60	3
1.2	Version 02.50	3
1.3	Version 02.40	4
1.4	Version 02.32	5
1.5	Version 02.30	6
1.6	Version 02.22	6
1.7	Version 02.20	6
1.8	Version 02.00	7
1.9	Version 01.50	8
1.10	Version 01.40	9
1.11	Version 01.32	10
1.12	Version 01.30	11
1.13	Version 01.20	13
1.14	Version 01.10	14
1.15	Older Releases	15
2	Modifications to the Documentation	17
3	Firmware Update	18
3.1	Update Information	18
3.2	Updating the Firmware	19
4	Open Source Acknowledgement	22
5	Customer Support	34

1 Information on the Current Version and History

1.1 Version 02.60

- Released: June 2012

New Functionality

- DVB-C2 (R&S SFE-K17): Multi-PLP/Single D-Slice is supported
- Digital IQ (R&S SFE-K80): Info interface is available
- DVB-S2 (R&S SFE-K8): Symbol rate extended to meet NORDIG standard
- MoCA waveforms (R&S SFU-K364) supported
- New software update process established
- Remote: Zeroconf and mDNS to ease the direct network connection is supported
- TsGen: TS libraries LIB-K70, K71, K72 and K73 supported
- Display of Device ID supported

Fixed Issues

- "TX RECALL: OPTION MISSING" is shown after installing new option and switching to new option
- ARB (R&S SFx-K35): After Recall Appl., recovery of ARB clock rate is faulty
- DVB-T2 (R&S SFU-K16): False S2field1 warning fixed
- DVB-T2 (R&S SFU-K16): 'static_flag' and 'static_padding_flag' signaling for T2Version >= 1.2.1 fixed
- EMC Test streams (R&S SFU-K228): Audio isn't seamless
- Fading: After loading of "*.fad" fading profile ARB Clock Freq. is reset.
- Fading: Speed is correct after software startup and recall of fading profiles
- T-DMB/DAB (R&S SFU-K11): Wrong Null symbol in transmission mode 3

Known Issues

- TsGen: MediaFLO streams (R&S SFU-K222) not decrypted correctly

1.2 Version 02.50

- Released: October 2011

New Functionality

- DVB-S (R&S SFE-K2): Additional roll off factor 0.20 for DIRECTV application added
- DVB-T2 (R&S SFE-K16): Additional SCPI scripts available
- DVB-T2 (R&S SFE-K16): MISO/SFN supported
- Audio BC (R&S SFE-K170): FM RDS: 0x0D terminating character missing
- Audio BC (R&S SFE-K170): FM RDS: Editor accept extended keyboard entries
- DMB Streams France (R&S SFU-K229) supported
- DTV interferers (R&S SFU-K354): DVB-T2 7MHz interferer signal added
- ISDB-Tmm waveforms (R&S SFU-K365) supported

Fixed Issues

- ATV, NICAM ENCODER: Different group delay between external AF inputs.
- DVB-T (R&S SFE-K1): Signal without echoes
- ISDB-T (R&S SFE-K6): Correct PCR restamping with TS PLAYER data stream
- DVB-T2 (R&S SFE-K16): T2MI=ON: Channel Bandwidth = 6, 7 MHz is not working correctly
- Audio BC (R&S SFE-K170): Preemphasis calculation of frequency below 1kHz is missing

Known Issues

- DVB-T2 (R&S SFE-K16): SinglePLP with TIME_IL_TYPE = 1 via T2MI-Interface not yet supported

1.3 Version 02.40

- Released: July 2011

New Functionality

- ARB (R&S SFE-K35): Reload algorithm dependent on filename, date/time and size
- ARB (R&S SFE-K35): 1GSa memory is supported
- R&S SFE-K38: Multichannel ARB waveforms are supported
- CMMB (R&S SFE-K15): PMS TS Stuffing allowed
- DVB-T2 (R&S SFE-K16): MPLP is supported
- DVB-T2 (R&S SFE-K16): SCPI scripts for DTG, NORDIG, OFCOM and V&V setups
- ISDB-S waveforms (R&S SFU-K362) are supported

- Satellite interferers (SFU-K363) are supported
- MediaFLO (R&S SFE-K10): AIS 2.0 is supported
- R&S SFU-K227 T2MI stream library supports content streams
- TsGen: Performance optimized when decrypting non gts based transport streams
- SFE100: Reset in progress is indicated

Fixed Issues

- DVB-T2 (R&S SFU-K16): Single-PLP parameters not settable, if R&S SFU-K20 or R&S SFU-K22 is not available
- FADING: Recall of unchanged predefined fading profiles shows Standard USER
- Local Vector Modulation Adjustment is not possible for frequencies ≤ 87 MHz
- Recall of instrument settings may corrupt GUI menus
- SFE100: Multiple start of recovery destroys HD image
- TsGen: Naming of missing software options is unclear
- TsGen: Seamless TRP may cause assertions
- Digital In: Measurement of low-level input signals not correct
- SFE100: High power option (R&S SFE-B90): Level linearity is not ensured
- Audio BC: Sporadic remote timeouts occur after switching signal source
- ISDB-T: Default value of AC Data corrected (now ALL1)
- Remote: Command error at READ:IQC:TDMB:PROT:PROF and LEV

Known Issues

- SFE: DVB-T2 (R&S SFE-K16): The fading function is not supported with this firmware version
- DVB-T2 (R&S SFE-K16): Maximum number of PLP is limited to 6
- DVB-T2 with T2MI=ON: Channel Bandwidth = 6, 7 MHz is not working correctly

1.4 Version 02.32

- Released: October 2010

Fixed Issues

- DVB-T2: SFE: Fading is not supported
- SFE100: ARB works not with K35
- Level is not correct after RECALL APPL
- CMMB: Long remote control response time when missing input signal

- Fading: Uncertainty of 10ns in delay and 0.1° in phase due to rounding issues.

1.5 Version 02.30

- Released: October 2010

New Functionality

- DVB-T2 (SFE/SFE100-K16): SPLP is supported
- Satellite Interferers (SFU-K363) is supported
- T2-MI Streams (SFU-K227) is supported
- EMC Test Streams (SFU-K228) is supported
- TsGen: Support of ETI files with extension .xeti

Modified Functionality

- TsGen: K22: Sample TRP streams are included
- Remote: VX111 protocol works immediately after booting
- CMMB: Default values changed

Fixed Issues

- Fading: Doppler shift is not correctly calculated
- ATV, AudioBC: Different group delay between external AF inputs

Known Issues

- SFE: DVB-T2: The fading function is supported with the next version 02.32

1.6 Version 02.22

- Released: June 2010

Fixed Issues

- Favorites: Indicated menu path of parameters is not correct
- CMMB: SFE Fading not supported, SFE100 Noise not supported

1.7 Version 02.20

- Released: April 2010

New Functionality

- Fading (SFE-K30) is supported
- SFE100: NOISE: Narrow-band AWGN generator option is supported
- FILE: Run SCPI script is supported

Fixed Issues

- T-DMB/DAB: After switching the parameter transmission mode, sometimes the data structure is invalid
- ARB: Generator has problems with deleted waveform files
- Remote: GUI is not correct updated after SYST:KLOCK ON
- Remote: *TST? answers reverse

Known Issues

- SFE: CMMB: The fading function is supported with the next version 02.22.
- SFE100: CMMB: The narrow-band AWGN is supported with the next version 02.22.

1.8 Version 02.00

- Released: January 2010

New Functionality

- SFE100: Multi standard functionality is supported
- ATV B/G: Group delay precorrection for B/G Australia is available

Modified Functionality

- ATV: No warning displayed when changing residual carrier
- ATV VIDEO BASIC: Version 02.10 supports uniform test line assignment

Fixed Issues

- BER: Inversion of serial data input affects BER TS input
- CMMB: Output level too low in 2MHz mode
- T-DMB / DAB: Spectrum has half bandwidth
- DVB-T rare issue: Signal corrupt after changing transmission standard
- TsGen has wrong data rate in bin mode after RECALL
- Application error when terminating the application

Known Issues

- T-DMB/DAB: After switching the parameter transmission mode, sometimes the data structure is invalid. A receiver can synchronize to the frame structure but cannot detect the stream content. In this case, switch the transmission mode again.

1.9 Version 01.50

- Released: September 2009

New Functionality

- ATSC M/H (SFx-K18) is supported
- SFE100 Var.12 is supported
- DRM+ WAVEFORMS (SFU-K361) are supported

Modified Functionality

- BERT: New feature log file
- FM: RDS: Group type 3A and 8A is used for TMC only
- FM: RDS: Radio Text and TMC without the corresponding group type in GROUP SEQUENCE is set to busy permanently
- ISDB-T: Provide warning when measured data rate higher than max useful data rate
- Remote: ARB: Query command for maximum number of samples available
- Softkey for adjustment of vector modulation local is available

Fixed Issues

- ATV - Malfunction of video amplitude measurement
- CMMB: Test signal: Generated PRBS is according standard
- CMMB: MF-stream can't be analyzed when Urgent Broadcast Table is present
- Info manager shows multiple punctuation marks as separator
- Info manager shows wrong warning
- Malfunction of input interface at MPEG-TS of type SYNC/187PAYLOAD
- T-DMB/DAB incorrect information about MID
- TsGen: Recall of a play file with data rate lower than the actual minimum data rate is not correct.

Known Issues

-

1.10 Version 01.40

- Released: May 2009

For instruments delivered after May 2009 the upper frequency limit is extended to 2.7 GHz without any restrictions on level accuracy.

With instruments delivered earlier, the upper frequency limit is also extended to 2.7 GHz, but in the range from 2.5 GHz to 2.7 GHz, the level inaccuracy may be increased.

In this case 'FREQUENCY OVERRANGE' is indicated.

New Functionality

- RF: Frequency range is extended to 2.7 GHz
- CMMB (SFE/SFE100-K15) supported
- CMMB: Input Signal - Source Test Signal is supported
- CMMB stream library (SFU-K225) is supported
- CMMB waveforms (SFU-K358) are supported
- ATV-Multi (SFE100-K195) is supported
- DVB-T2 waveforms (SFU-K359) are supported
- TsGen: Seamless TRP is available
- FILE: Save now function available at SFE100 local GUI
- ARB and TsGen: Instrument setup via config file is supported
- OCXO Upgrade (SFE-U3) is supported

Modified Functionality

- Audio BC: FM: Fully support of RDS functions
- ATV: Audio frequency sweep in video generator supported
- DVB-S2 Symbolrate up to 45 MSymb/s (overrange)
- ISDB-T: Coder supports test packets with payload "00" and "FF"
- ISDB-T: TMCC "next" parameters are configurable
- ISDB-T (1/3 SEG): Residual spectrum at offset +/- IFFT sampling frequency (8.126 MHz) eliminated
- K22: File name extension *.eti for ETI streams supported
- ARB: 2 GByte SODIMM supported
- T-DMB/DAB: TII signalling according to standard
- T-DMB/DAB: ZERO payload is supported
- Test packets with payload = 00/FF supported
- ARB memory management is optimized

- Settling time for RF = ON is fast and constant

Fixed Issues

- RF: Sporadic signal loss solved
- Communications displays wrong IP address
- ISDB-T Residual Carrier Shift does not have an impact on DVB-T center frequency
- ISDB-T: clean constellation diagram
- Beta: ISDB-TSB: Time interleaving index I = 32 is available
- ATV remote commands without [SPECial] works correct.
- ATV values are stored after changing the modulation signal source
- BER measurement with inverted clock works correctly
- DVB-S2 corrupt TS at some transmission parameters
- Valid DVB-S2 signal after change of code rate
- J83/B: Interleaver mode switching works correct
- T-DMB/DAB padding complies with standard
- TsGen is not showing BB: NO FPGA REGISTER!
- TsGen is working with packet size of 204
- TsGen: Selected filenames in Info area and open file area are the same
- Remote: *TST? works correct.
- Remote: FREQ:CHAN:TABL:FREQ[?] works correct
- "End program" with progress bar is not shown during shutdown
- Application does not crash when pressing FILE button in channel table
- RDS-Coder Radiotext: Sending of two equal ratio text one after another will cause the busy sign permanently
- FREQ. DEV. AUDIO indicates calculated deviation of FREQ. LEFT or FREQ. RIGHT in spite of setting SOURCE LEFT or SOURCE RIGHT ist set to OFF

Known Issues

- BER: Test Transport Stream SYNC 187 PAYLOAD with FF(Hex) Payload cannot be decoded correctly at TS1/TS2 input.
- TSGEN: For units equipped with GTS Player option (SFE/SFE100-K20), a Recall following a Preset may not set the TS-Datarate correctly.

1.11 Version 01.32

- Released: October 2008

New Functionality

- AM/FM RDS Coder (R&S SFE/SFE100-K170): Basic RDS FM functional.
- DIRECTV Legacy Modulation Coder (R&S SFE/SFE100-K9) supported.
- HD Radio™ Waveforms (R&S SFU-K357) supported.
- TV channel tables installed ex factory.
- R&S SFU channel table files can be used in R&S SFE/SFE100 and vice versa.

Modified Functionality

- R&S SFE: No limitation regarding number of standards.
- Remote control: 'UNIT:VOLTage' is compliant to R&S SFU.

Fixed Issues

- BER Measurement (R&S SFE-K60) fully functional.
- ARB Waveform Generator (R&S SFE/SFE100-K35) play beyond 128MS works correctly.
- ATV: LOAD ATV VIDEO LIB: Long file paths do not exceed their text box.
- SAVE / RECALL APPL with ATV/AUDIO BC file works correctly.
- ISDB-T/ISDB-T_B /ISDB-T_{SB} Coder (R&S SFE/SFE100-K6): SEGMENTS (A) and (B) are shown correctly after switching SYSTEM from ISDB-T_{SB} to ISDB-T.

Known Issues

- J.83/B Coder (R&S SFE/SFE100-K5), 1024QAM: Switching interleaver modes may cause loss of output signal. Workaround: Toggle symbol rate or constellation.

1.12 Version 01.30

- Released: September 2008

New Functionality

- DVB-S/DVB-DSNG Coder (R&S SFE/SFE100-K8): DVB-S2 supported.
- J.83/B Coder (R&S SFE/SFE100-K5) supported.
- MediaFLO™ Coder (R&S SFE/SFE100-K10) supported.
- AM/FM RDS Coder (R&S SFE/SFE100-K170): AM/FM supported.
- BER Measurement (R&S SFE-K60) supported.
- ARB Waveform Generator (R&S SFE/SFE100-K35): Memory (1GByte) for 256 MSamples is supported.

- Remote control: RAW TCP/IP is supported.
- TS Generator (R&S SFE/SFE100-K20), remote control: Read position is readable.
- TX: Digital IQ IN indicates input symbol rate.
- R&S WinIQSIMTM Support (R&S SFE-K350) and CUSTOM OFDM (ARB) (R&S SMU-K15) supported.
- DAB+ Streams: (R&S SFU-K223) supported.
- ISDB-T Streams: (R&S SFU-K224) supported.
- File selector: Recent list available.

Modified Functionality

- RF:
 - Level range extended.
 - Sideband suppression is improved.
- DVB-S/DVB-DSNG Coder (R&S SFE/SFE100-K3): Lower limit of symbol rate in DVB-S extended.
- TS Generator (R&S SFE/SFE100-K20):
 - File type filter is improved.
 - No more sporadic refuses to play out a file.
- Dynamic warnings of any application are visible in all applications.

Fixed Issues

- TS Generator (R&S SFE/SFE100-K20): After preset, R&S SFE with TRP Player (R&S SFE-K22) and without TS Generator (R&S SFE-K20) does not report warning: gts file option missing.
- DVB-T/H Coder (R&S SFE/SFE100-K1): No longer incorrect TS messages in DVB-T.
- Focus loss pressing <0> and <ESC> solved.
- Long file paths do not exceed their text boxes.
- Type libraries / DLLs can be loaded after software update V01.20.

Known Issues

- BER Measurement (R&S SFE-K60): PRBS measurement limited to continuous clock and ENABLE=always. Due to polling short interrupts may not be detected. Not supported with T-DMB (T-DMB/DAB Coder, R&S SFE/SFE100-K11).
- AM/FM RDS Coder (R&S SFE/SFE100-K170): FM RDS not fully functional.

1.13 Version 01.20

- Released: June 2008

New Functionality

- DVB-C / ISDB-C (R&S SFE/SFE100-K2) supported.
- DVB-S/DVB-DSNG Coder (R&S SFE/SFE100-K3): DVB-S supported.
- ATSC/ 8VSB Coder (R&S SFE/SFE100-K4): 8VSB supported.
- ATV: Automatic VIDEO gain is supported.
- ATV Video (R&S ATV Video): Additional signals.
- ISDB-T/ISDB-T_B /ISDB-T_{SB} Coder (R&S SFE/SFE100-K6): Test signal "sync + 187 payload" supported.
- R&S SFE100:
 - Setup: Hardware and software information is displayed.
 - 1PPS used for TRIGGER IN.

Modified Functionality

- TS Generator (R&S SFE/SFE100-K20): After preset, TS Generator is in running state.
- ARB Waveform Generator (R&S SFE/SFE100-K35): ARB file is checked for valid software option before loading.
- ISDB-T/ISDB-T_B /ISDB-T_{SB} Coder (R&S SFE/SFE100-K6): Improved MER of central carrier.
- Setup Communications:
 - After editing is finished, menu data are updated again.
 - Full computer name is not editable.

Fixed Issues

- Digital IN: PEP value is refreshed with pressing REFRESH under SIGNAL INFO/STAT.
- ARB Waveform Generator (R&S SFE/SFE100-K35):
 - Preset value of clock frequency harmonized with preset file.
 - Memory size is indicated correctly.
- ATV Video (R&S ATV Video):
 - Field jitter of NTSC works correctly.
 - Frequency response of SINx/x is repaired.
 - Color burst position and length of PAL, NTSC are correct.

- Color burst length and field jitter are correct.
- ISDB-T/ISDB-T_B /ISDB-T_{SB} Coder (R&S SFE/SFE100-K6):
 - Time interleaver fully functional.
 - Remote control: ACD2 works correctly.
- Remote control: Commands for signal info / statistics supported.
- TS Generator (R&S SFE/SFE100-K20) works correctly after changing DTV standard.
- Video Generator (R&S SFE/SFE100-K23):
 - Option is shown in active software options.
 - Memory size for video generator is indicated correctly.
- "Attach to card reader failed" during startup will not appear any longer.
- 108 Mbit/s limit of ASI interface removed.
- After (repeated) preset and pressing the rotary knob (as enter), the softkeys are working again.
- During file load, menu and progress bar are visible.
- Recall of APPL does not result in a deadlock.
- Signal info / statistics: Refresh only visible with DIGITAL IN selected.
- With RF lower than 87 MHz, local adjustment works correctly.

1.14 Version 01.10

- Released: February 2008
- DTMB functionality according standard (8 MHz) guaranteed only.

New Functionality

- ISDB-T/ISDB-T_B /ISDB-T_{SB} Coder (R&S SFE/SFE100-K6) supported.
- DTMB/DMB-TH Coder (R&S SFE/SFE100-K12): DTMB supported.
- TRP Player (R&S SFE/SFE100-K22) supported.
- TS Generator (R&S SFE/SFE100-K20):
 - Supported
 - New PCIe interface (01.02.00.04).
- ATV Standard B/G, D/K, M/N, L Coder (R&S SFE/SFE100-K190/K191/K193/K194) and ATV Multistandard (R&S SFE-K195) supported.
- Extended I/Q Input (R&S SFE/SFE100-K80): Dig. I/Q IN supported.
- ARB Waveform Generator (R&S SFE/SFE100-K35):

- File name and clock frequency displayed in TX application.
- Cable Interferers (R&S SFU-K356) supported.
- DVB-T/H Coder (R&S SFE/SFE100-K1): Stuffing OFF supported.

Modified Functionality

- Remote Control: Subsystem Identifier "IQCoder:" is optional.
- Trigger Output available with REFERENCE EXT enabled.

Fixed Issues

- Diagnostic of points with negative voltage works correctly.
- Error Message "MISSING SW OPTION" added.
- Frequency setting at multiples of 120 MHz is correct.
- T-DMB/DAB Coder (R&S SFE/SFE100-K11): STC/SSTC table handled correctly with missing ETI signal at start-up in T-DMB.
- Vector modulation adjustment is working with RF OFF.

Known Issues

- DVB-T/H Coder (R&S SFE/SFE100-K1): TS Generator (R&S SFE/SFE100-K20) with 5 MHz bandwidth not working in DVB-T.
- ISDB-T/ISDB-T_B /ISDB-T_{SB} Coder (R&S SFE/SFE100-K6): When switching from other Transmission-Standards to ISDB-T: Time interleaver with I=0 working only; when booting with ISDB-T: Time interleaver fully functional.
- ARB Waveform Generator (R&S SFE/SFE100-K35): Short spurious signals when switching RF, level or clock rate in sporadic cases.

1.15 Older Releases

VERSION 01.04 / 2007-12-17 / Manual E2

Note: For SFE100 demo units only

Known problems: DVB-T hierarchical coding: Some combinations with external TS not working properly

- DTMB (K12) supported
- ATV (K190, K191, K193, K194) supported
- High Power SFE100-B90 supported

VERSION 01.02 / 2007-09-28 / Manual E1

Note: -

Known problems: None

- T-DMB (K11) supported
- ARB (K35) supported

VERSION 01.00 / 2007-08-31 / Manual E1

Note: FW for demo units only

- Known problems: None

- DVB-T/H (K1) supported

- AWGN (K40) supported / SFE only



2 Modifications to the Documentation

The current documentation is up-to-date.

3 Firmware Update

Your instrument is delivered with the latest firmware version available. Firmware updates are provided on the Rohde & Schwarz Home Page (<http://www.rohde-schwarz.com/downloads/firmware/sfe.html>), by Rohde & Schwarz service centers or sales offices.

You can install the new firmware version by using either the USB or the LAN interface:

- For an update using the USB interface, store the downloaded update files on a memory stick.
- For an update using the LAN interface (due to speed recommended), store the downloaded update files on a network directory.

Further information

- Installing software options
See User Manual, chapter "Basic Instrument Configurations".
- Connecting the instrument to a network (LAN)
See the User Manual, chapter "Operating the R&S SFE / SFE100 in a LAN".
- Sharing and accessing instrument drives
See the User Manual, chapter "Operating the R&S SFE / SFE100 in a LAN".
- R&S SFE only: Making a backup before installing new firmware
See the User Manual, chapter "Installed Software".

3.1 Update Information

The firmware update consists of the following files. The version numbers in the file names vary with each update (symbolized by placeholder x).

- Firmware: *Sfe_xx.xx.xx.xx(Release).exe*

If Analog Realtime Modulations (ATV) are used, the following file is necessary too:

- Video signals: *AtvVideoBasic_xx.xx.xx.xx.msi*

The update is performed under control of the Windows XP Embedded operating system. Windows XP can only be accessed if a mouse and optional an external keyboard is connected.

3.2 Updating the Firmware

The updating process consists of 2 steps:

1. Preparing the instrument for the installation.
R&S SFE: see [Preparing the R&S SFE for the Installation](#) on page 19
R&S SFE100: see [Preparing the R&S SFE100 for the Installation](#) on page 19
2. Installing the new firmware version. The procedure is the same for R&S SFE and R&S SFE100.
See [Installing the New Firmware Version](#) on page 20

3.2.1 Preparing the R&S SFE for the Installation

1. Switch off the R&S SFE.
2. Connect mouse and/or external keyboard to the USB interface.
3. Switch on the R&S SFE.
4. Wait until the R&S SFE firmware has booted and the application has started.
5. Access the Windows XP Embedded desktop.
 - Operation with mouse: Click the "Close" button of the R&S SFE application.
 - Operation with keyboard: Press ALT+F4 to close the application.The Windows XP Embedded desktop is displayed.
6. Copy the update files.
 - Using the Windows Explorer, open the folder with the update files.
 - Delete all files in *D:\SFE\Installations*.
 - Copy the update files to *D:\SFE\Installations*.

Proceed with the installation as described on page 20.

3.2.2 Preparing the R&S SFE100 for the Installation

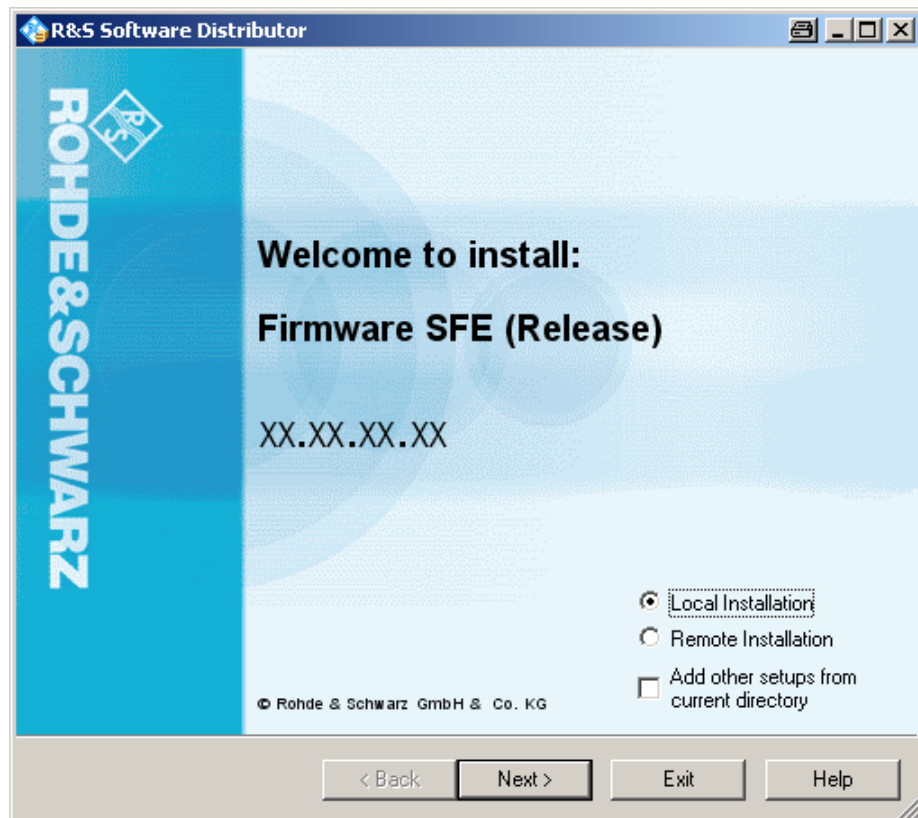
1. Switch on the R&S SFE100.
2. Wait until the R&S SFE100 firmware has booted and the application has started.
3. Using Remote Desktop or VNC, start remote operation of the R&S SFE100.
4. Click the "Close" button of the R&S SFE100 application to access the Windows XP Embedded desktop.

The Windows XP Embedded desktop is displayed.

5. Copy the update files.
 - Using the Windows Explorer, open the folder with the update files.
 - Delete all files in *D:\SFE100\Installations*.
 - Copy the update files to *D:\SFE100\Installations*.

3.2.3 Installing the New Firmware Version

1. Execute *Sfe_xx.xx.xx.xx(Release).exe*.
The R&S Software Distributor is displayed.



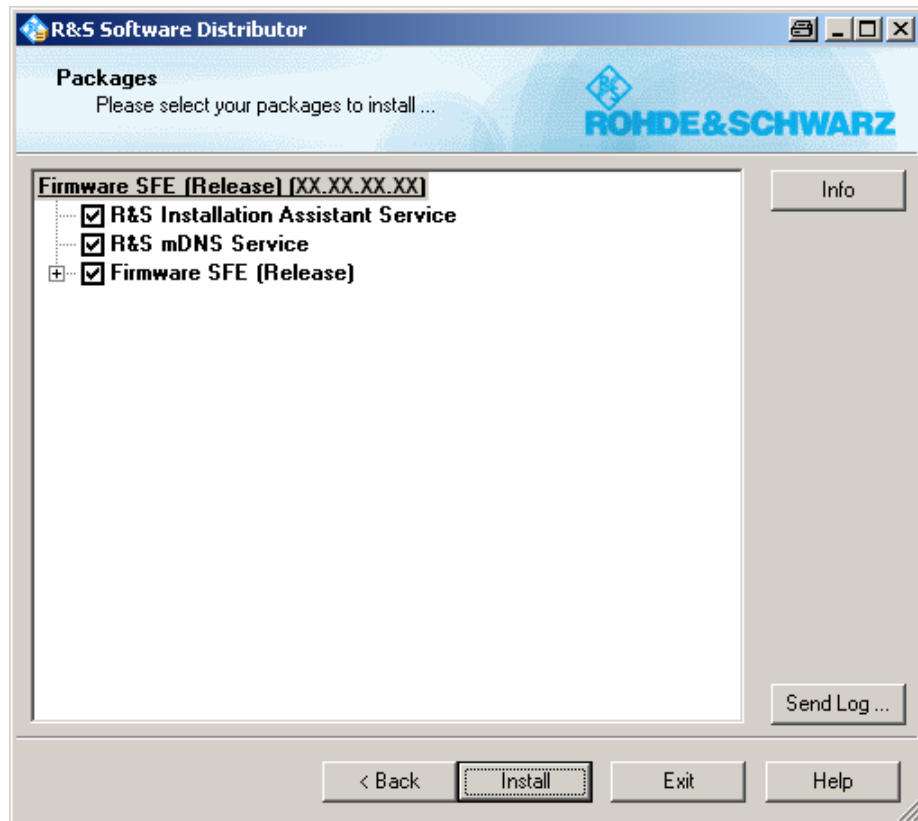
2. Select the installation type:

"Local Installation": If you start your setup file from the R&S SFE hard disk or an external storage medium (USB memory stick, CD-ROM with external drive) connected to the R&S SFE.

"Remote Installation": If your setup files are on an external host computer that is connected to your R&S SFE.

Note: A remote installation allows you to update R&S SFEs simultaneously. To use this feature, the previously installed firmware version must be at least V02.60.

3. Click "Next>".



All packages that you need to install are already selected.

4. Click "Install".
The installation process itself is self-explanatory.
5. After the installation, click the "Exit" button.
6. For Analog Realtime Modulations (ATV) only:
Execute *AtvVideoBasic_01.xx.xx.xx.msi* to install the new video signals (if available).

4 Open Source Acknowledgement

This instrument firmware makes use of valuable open source software packages. The most important of them are listed below together with their corresponding open source license. The verbatim license texts are provided in the following chapters.

Package	Link	License
OpenSSL	http://www.openssl.org	OpenSSL/SSLeay
zlib	http://www.zlib.net	zlib, v.1.2.3
Xalan Xerces	http://xalan.apache.org/ http://xerces.apache.org/	Apache Software License, Version 2.0
ONC/RPC	http://www.plt.rwth-aachen.de	SUN
VNC	http://www.realvnc.com/	GPL V3

This product includes cryptographic software written by Eric Young (eay@cryptsoft.com) and software written by Tim Hudson (tjh@cryptsoft.com).

Rohde & Schwarz would like to thank the open source community for their valuable contribution to embedded computing. The source code of the open source packages is available on request.

OpenSSL / SSLeay License

LICENSE ISSUES
=====

The OpenSSL toolkit stays under a dual license, i.e. both the conditions of the OpenSSL License and the original SSLeay license apply to the toolkit. See below for the actual license texts. Actually both licenses are BSD-style Open Source licenses. In case of any license issues related to OpenSSL please contact openssl-core@openssl.org.

OpenSSL License

```
/* =====
 * Copyright (c) 1998-2007 The OpenSSL Project. All rights reserved.
 *
 * Redistribution and use in source and binary forms, with or without
 * modification, are permitted provided that the following conditions
 * are met:
 *
 * 1. Redistributions of source code must retain the above copyright
 * notice, this list of conditions and the following disclaimer.
 *
 * 2. Redistributions in binary form must reproduce the above copyright
 * notice, this list of conditions and the following disclaimer in
 * the documentation and/or other materials provided with the
 * distribution.
 *
 * 3. All advertising materials mentioning features or use of this
 * software must display the following acknowledgment:
 * "This product includes software developed by the OpenSSL Project
 * for use in the OpenSSL Toolkit. (http://www.openssl.org/)"
 *
 * 4. The names "OpenSSL Toolkit" and "OpenSSL Project" must not be used to
```

```

* endorse or promote products derived from this software without
* prior written permission. For written permission, please contact
* openssl-core@openssl.org.
*
* 5. Products derived from this software may not be called "OpenSSL"
* nor may "OpenSSL" appear in their names without prior written
* permission of the OpenSSL Project.
*
* 6. Redistributions of any form whatsoever must retain the following
* acknowledgment:
* "This product includes software developed by the OpenSSL Project
* for use in the OpenSSL Toolkit (http://www.openssl.org/)"
*
* THIS SOFTWARE IS PROVIDED BY THE OpenSSL PROJECT ``AS IS'' AND ANY
* EXPRESSED OR IMPLIED WARRANTIES, INCLUDING, BUT NOT LIMITED TO, THE
* IMPLIED WARRANTIES OF MERCHANTABILITY AND FITNESS FOR A PARTICULAR
* PURPOSE ARE DISCLAIMED. IN NO EVENT SHALL THE OpenSSL PROJECT OR
* ITS CONTRIBUTORS BE LIABLE FOR ANY DIRECT, INDIRECT, INCIDENTAL,
* SPECIAL, EXEMPLARY, OR CONSEQUENTIAL DAMAGES (INCLUDING, BUT
* NOT LIMITED TO, PROCUREMENT OF SUBSTITUTE GOODS OR SERVICES;
* LOSS OF USE, DATA, OR PROFITS; OR BUSINESS INTERRUPTION)
* HOWEVER CAUSED AND ON ANY THEORY OF LIABILITY, WHETHER IN CONTRACT,
* STRICT LIABILITY, OR TORT (INCLUDING NEGLIGENCE OR OTHERWISE)
* ARISING IN ANY WAY OUT OF THE USE OF THIS SOFTWARE, EVEN IF ADVISED
* OF THE POSSIBILITY OF SUCH DAMAGE.
* =====
*
* This product includes cryptographic software written by Eric Young
* (eay@cryptsoft.com). This product includes software written by Tim
* Hudson (tjh@cryptsoft.com).
*
*/

```

Original SSLeay License

```

-----
/* Copyright (C) 1995-1998 Eric Young (eay@cryptsoft.com)
* All rights reserved.
*
* This package is an SSL implementation written
* by Eric Young (eay@cryptsoft.com).
* The implementation was written so as to conform with Netscapes SSL.
*
* This library is free for commercial and non-commercial use as long as
* the following conditions are aheared to. The following conditions
* apply to all code found in this distribution, be it the RC4, RSA,
* lhash, DES, etc., code; not just the SSL code. The SSL documentation
* included with this distribution is covered by the same copyright terms
* except that the holder is Tim Hudson (tjh@cryptsoft.com).
*
* Copyright remains Eric Young's, and as such any Copyright notices in
* the code are not to be removed.
* If this package is used in a product, Eric Young should be given
* attribution as the author of the parts of the library used.
* This can be in the form of a textual message at program startup or
* in documentation (online or textual) provided with the package.
*
* Redistribution and use in source and binary forms, with or without
* modification, are permitted provided that the following conditions
* are met:
* 1. Redistributions of source code must retain the copyright
* notice, this list of conditions and the following disclaimer.
* 2. Redistributions in binary form must reproduce the above copyright
* notice, this list of conditions and the following disclaimer in the
* documentation and/or other materials provided with the distribution.
* 3. All advertising materials mentioning features or use of this software
* must display the following acknowledgement:
* "This product includes cryptographic software written by
* Eric Young (eay@cryptsoft.com)"

```

```

* The word 'cryptographic' can be left out if the rouines from the
* library being used are not cryptographic related :-).
* 4. If you include any Windows specific code (or a derivative thereof)
* from the apps directory (application code) you must include an
* acknowledgement:
* "This product includes software written by
* Tim Hudson (tjh@cryptsoft.com)"
*
* THIS SOFTWARE IS PROVIDED BY ERIC YOUNG ``AS IS" AND
* ANY EXPRESS OR IMPLIED WARRANTIES, INCLUDING, BUT NOT LIMITED TO, THE
* IMPLIED WARRANTIES OF MERCHANTABILITY AND FITNESS FOR A PARTICULAR
* PURPOSE ARE DISCLAIMED. IN NO EVENT SHALL THE AUTHOR OR CONTRIBUTORS BE
* LIABLE FOR ANY DIRECT, INDIRECT, INCIDENTAL, SPECIAL, EXEMPLARY, OR
* CONSEQUENTIAL DAMAGES (INCLUDING, BUT NOT LIMITED TO, PROCUREMENT OF
* SUBSTITUTE GOODS OR SERVICES; LOSS OF USE, DATA, OR PROFITS; OR BUSINESS
* INTERRUPTION)
* HOWEVER CAUSED AND ON ANY THEORY OF LIABILITY, WHETHER IN CONTRACT,
* STRICT LIABILITY, OR TORT (INCLUDING NEGLIGENCE OR OTHERWISE) ARISING
* IN ANY WAY OUT OF THE USE OF THIS SOFTWARE, EVEN IF ADVISED OF THE
* POSSIBILITY OF SUCH DAMAGE.
*
* The licence and distribution terms for any publically available version
* or derivative of this code cannot be changed. i.e. this code cannot
* simply be copied and put under another distribution licence
* [including the GNU Public Licence.]
*/

```

ZLib License

```

/* zlib.h -- interface of the 'zlib' general purpose compression library
version 1.2.3, July 18th, 2005
Copyright (C) 1995-2005 Jean-loup Gailly and Mark Adler

```

This software is provided 'as-is', without any express or implied warranty. In no event will the authors be held liable for any damages arising from the use of this software.

Permission is granted to anyone to use this software for any purpose, including commercial applications, and to alter it and redistribute it freely, subject to the following restrictions:

1. The origin of this software must not be misrepresented; you must not claim that you wrote the original software. If you use this software in a product, an acknowledgment in the product documentation would be appreciated but is not required.
2. Altered source versions must be plainly marked as such, and must not be misrepresented as being the original software.
3. This notice may not be removed or altered from any source distribution.

```

Jean-loup Gailly jloup@zip.org
Mark Adler madler@alumni.caltech.edu
*/

```

Apache License

```

Version 2.0, January 2004
http://www.apache.org/licenses/

```

TERMS AND CONDITIONS FOR USE, REPRODUCTION, AND DISTRIBUTION

1. Definitions.

"License" shall mean the terms and conditions for use, reproduction, and distribution as defined by Sections 1 through 9 of this document.

"Licensor" shall mean the copyright owner or entity authorized by the copyright owner that is granting the License.

"Legal Entity" shall mean the union of the acting entity and all other entities that control, are controlled by, or are under common control with that entity. For the purposes of this definition, "control" means (i) the power, direct or indirect, to cause the direction or management of such entity, whether by contract or otherwise, or (ii) ownership of fifty percent (50%) or more of the outstanding shares, or (iii) beneficial ownership of such entity.

"You" (or "Your") shall mean an individual or Legal Entity exercising permissions granted by this License.

"Source" form shall mean the preferred form for making modifications, including but not limited to software source code, documentation source, and configuration files.

"Object" form shall mean any form resulting from mechanical transformation or translation of a Source form, including but not limited to compiled object code, generated documentation, and conversions to other media types.

"Work" shall mean the work of authorship, whether in Source or Object form, made available under the License, as indicated by a copyright notice that is included in or attached to the work (an example is provided in the Appendix below).

"Derivative Works" shall mean any work, whether in Source or Object form, that is based on (or derived from) the Work and for which the editorial revisions, annotations, elaborations, or other modifications represent, as a whole, an original work of authorship. For the purposes of this License, Derivative Works shall not include works that remain separable from, or merely link (or bind by name) to the interfaces of, the Work and Derivative Works thereof.

"Contribution" shall mean any work of authorship, including the original version of the Work and any modifications or additions to that Work or Derivative Works thereof, that is intentionally submitted to Licensor for inclusion in the Work by the copyright owner or by an individual or Legal Entity authorized to submit on behalf of the copyright owner. For the purposes of this definition, "submitted" means any form of electronic, verbal, or written communication sent to the Licensor or its representatives, including but not limited to communication on electronic mailing lists, source code control systems, and issue tracking systems that are managed by, or on behalf of, the Licensor for the purpose of discussing and improving the Work, but excluding communication that is conspicuously marked or otherwise designated in writing by the copyright owner as "Not a Contribution."

"Contributor" shall mean Licensor and any individual or Legal Entity on behalf of whom a Contribution has been received by Licensor and subsequently incorporated within the Work.

2. Grant of Copyright License. Subject to the terms and conditions of this License Contributor hereby grants to You a perpetual, worldwide, non-exclusive, no-charge, royalty-free, irrevocable copyright license to reproduce, prepare Derivative Works of, publicly display, publicly perform, sublicense, and distribute the Work and such Derivative Works in Source or Object form.

3. Grant of Patent License. Subject to the terms and conditions of this License, each Contributor hereby grants to You a perpetual, worldwide, non-exclusive, no-charge, royalty-free, irrevocable (except as stated in this section) patent license to make, have made, use, offer to sell, sell, import, and otherwise transfer the Work, where such license applies only to those patent claims licensable by such Contributor that are necessarily infringed by their Contribution(s) alone or by combination of their Contribution(s) with the Work to which such Contribution(s) was submitted. If You institute patent litigation against any entity (including a cross-claim or counterclaim in a lawsuit) alleging that the Work or a Contribution incorporated within the Work constitutes direct or contributory patent infringement, then any patent licenses granted to You under this License for that Work shall terminate as of the date such litigation is filed.

4. Redistribution. You may reproduce and distribute copies of the Work or Derivative Works thereof in any medium, with or without modifications, and in Source or Object form, provided that You meet the following conditions:

You must give any other recipients of the Work or Derivative Works a copy of this License; and

- a. You must cause any modified files to carry prominent notices stating that You

changed the files; and

b. You must retain, in the Source form of any Derivative Works that You distribute, all copyright, patent, trademark, and attribution notices from the Source form of the Work, excluding those notices that do not pertain to any part of the Derivative Works; and

c. If the Work includes a "NOTICE" text file as part of its distribution, then any Derivative Works that You distribute must include a readable copy of the attribution notices contained within such NOTICE file, excluding those notices that do not pertain to any part of the Derivative Works, in at least one of the following places: within a NOTICE text file distributed as part of the Derivative Works; within the Source form or documentation, if provided along with the Derivative Works; or, within a display generated by the Derivative Works, if and wherever such third-party notices normally appear. The contents of the NOTICE file are for informational purposes only and do not modify the License. You may add Your own attribution notices within Derivative Works that You distribute, alongside or as an addendum to the NOTICE text from the Work, provided that such additional attribution notices cannot be construed as modifying the License.

d. You may add Your own copyright statement to Your modifications and may provide additional or different license terms and conditions for use, reproduction, or distribution of Your modifications, or for any such Derivative Works as a whole, provided Your use, reproduction, and distribution of the Work otherwise complies with the conditions stated in this License.

5. Submission of Contributions. Unless You explicitly state otherwise, any Contribution intentionally submitted for inclusion in the Work by You to the Licensor shall be under the terms and conditions of this License, without any additional terms or conditions. Notwithstanding the above, nothing herein shall supersede or modify the terms of any separate license agreement you may have executed with Licensor regarding such Contributions.

6. Trademarks. This License does not grant permission to use the trade names, trademarks, service marks, or product names of the Licensor, except as required for reasonable and customary use in describing the origin of the Work and reproducing the content of the NOTICE file.

7. Disclaimer of Warranty. Unless required by applicable law or agreed to in writing, Licensor provides the Work (and each Contributor provides its Contributions) on an "AS IS" BASIS, WITHOUT WARRANTIES OR CONDITIONS OF ANY KIND, either express or implied, including, without limitation, any warranties or conditions of TITLE, NON-INFRINGEMENT, MERCHANTABILITY, or FITNESS FOR A PARTICULAR PURPOSE. You are solely responsible for determining the appropriateness of using or redistributing the Work and assume any risks associated with Your exercise of permissions under this License.

8. Limitation of Liability. In no event and under no legal theory, whether in tort (including negligence), contract, or otherwise, unless required by applicable law (such as deliberate and grossly negligent acts) or agreed to in writing, shall any Contributor be liable to You for damages, including any direct, indirect, special, incidental, or consequential damages of any character arising as a result of this License or out of the use or inability to use the Work (including but not limited to damages for loss of goodwill, work stoppage, computer failure or malfunction, or any and all other commercial damages or losses), even if such Contributor has been advised of the possibility of such damages.

9. Accepting Warranty or Additional Liability. While redistributing the Work or Derivative Works thereof, You may choose to offer, and charge a fee for, acceptance of support, warranty, indemnity, or other liability obligations and/or rights consistent with this License. However, in accepting such obligations, You may act only on Your own behalf and on Your sole responsibility, not on behalf of any other Contributor, and only if You agree to indemnify, defend, and hold each Contributor harmless for any liability incurred by, or claims asserted against, such Contributor by reason of your accepting any such warranty or additional liability.

END OF TERMS AND CONDITIONS

Sun RPC License

* Sun RPC is a product of Sun Microsystems, Inc. and is provided for
 * unrestricted use provided that this legend is included on all tape
 * media and as a part of the software program in whole or part. Users
 * may copy or modify Sun RPC without charge, but are not authorized
 * to license or distribute it to anyone else except as part of a product or
 * program developed by the user.

**
 SUN RPC IS PROVIDED AS IS WITH NO WARRANTIES OF ANY KIND INCLUDING THE
 * WARRANTIES OF DESIGN, MERCHANTABILITY AND FITNESS FOR A PARTICULAR
 * PURPOSE, OR ARISING FROM A COURSE OF DEALING, USAGE OR TRADE PRACTICE.

**
 Sun RPC is provided with no support and without any obligation on the
 * part of Sun Microsystems, Inc. to assist in its use, correction,
 * modification or enhancement.

**
 SUN MICROSYSTEMS, INC. SHALL HAVE NO LIABILITY WITH RESPECT TO THE
 * INFRINGEMENT OF COPYRIGHTS, TRADE SECRETS OR ANY PATENTS BY SUN RPC
 * OR ANY PART THEREOF.

**
 In no event will Sun Microsystems, Inc. be liable for any lost revenue
 * or profits or other special, indirect and consequential damages, even if
 * Sun has been advised of the possibility of such damages.

**
 Sun Microsystems, Inc.
 * 2550 Garcia Avenue
 * Mountain View, California 94043

GNU GENERAL PUBLIC LICENSE

Version 3, 29 June 2007

Copyright © 2007 Free Software Foundation, Inc. <<http://fsf.org/>>

Everyone is permitted to copy and distribute verbatim copies of this license document, but changing it is not allowed.

Preamble

The GNU General Public License is a free, copyleft license for software and other kinds of works.

The licenses for most software and other practical works are designed to take away your freedom to share and change the works. By contrast, the GNU General Public License is intended to guarantee your freedom to share and change all versions of a program--to make sure it remains free software for all its users. We, the Free Software Foundation, use the GNU General Public License for most of our software; it applies also to any other work released this way by its authors. You can apply it to your programs, too.

When we speak of free software, we are referring to freedom, not price. Our General Public Licenses are designed to make sure that you have the freedom to distribute copies of free software (and charge for them if you wish), that you receive source code or can get it if you want it, that you can change the software or use pieces of it in new free programs, and that you know you can do these things.

To protect your rights, we need to prevent others from denying you these rights or asking you to surrender the rights. Therefore, you have certain responsibilities if you distribute copies of the software, or if you modify it: responsibilities to respect the freedom of others.

For example, if you distribute copies of such a program, whether gratis or for a fee, you must pass on to the recipients the same freedoms that you received. You must make sure that they, too, receive or can get the source code. And you must show them these terms so they know their rights.

Developers that use the GNU GPL protect your rights with two steps: (1) assert copyright on the software, and (2) offer you this License giving you legal permission to copy, distribute and/or modify it.

For the developers' and authors' protection, the GPL clearly explains that there is no warranty for this free software. For both users' and authors' sake, the GPL requires that modified versions be marked as changed, so that their problems will not be attributed erroneously to authors of previous versions.

Some devices are designed to deny users access to install or run modified versions of the software inside them, although the manufacturer can do so. This is fundamentally incompatible with the aim of protecting users' freedom to change the software. The systematic pattern of such abuse occurs in the area of products for individuals to use, which is precisely where it is most unacceptable. Therefore, we have designed this version of the GPL to prohibit the practice for those products. If such problems arise substantially in other domains, we stand ready to extend this provision to those domains in future versions of the GPL, as needed to protect the freedom of users.

Finally, every program is threatened constantly by software patents. States should not allow patents to restrict development and use of software on general-purpose computers, but in those that do, we wish to avoid the special danger that patents applied to a free program could make it effectively proprietary. To prevent this, the GPL assures that patents cannot be used to render the program non-free.

The precise terms and conditions for copying, distribution and modification follow.

TERMS AND CONDITIONS

0. Definitions.

"This License" refers to version 3 of the GNU General Public License.

"Copyright" also means copyright-like laws that apply to other kinds of works, such as semiconductor masks.

"The Program" refers to any copyrightable work licensed under this License. Each licensee is addressed as "you". "Licensees" and "recipients" may be individuals or organizations.

To "modify" a work means to copy from or adapt all or part of the work in a fashion requiring copyright permission, other than the making of an exact copy. The resulting work is called a "modified version" of the earlier work or a work "based on" the earlier work.

A "covered work" means either the unmodified Program or a work based on the Program.

To "propagate" a work means to do anything with it that, without permission, would make you directly or secondarily liable for infringement under applicable copyright law, except executing it on a computer or modifying a private copy. Propagation includes copying, distribution (with or without modification), making available to the public, and in some countries other activities as well.

To "convey" a work means any kind of propagation that enables other parties to make or receive copies. Mere interaction with a user through a computer network, with no transfer of a copy, is not conveying.

An interactive user interface displays "Appropriate Legal Notices" to the extent that it includes a convenient and prominently visible feature that (1) displays an appropriate copyright notice, and (2) tells the user that there is no warranty for the work (except to the extent that warranties are provided), that licensees may convey the work under this License, and how to view a copy of this License. If the interface presents a list of user commands or options, such as a menu, a prominent item in the list meets this criterion.

1. Source Code.

The "source code" for a work means the preferred form of the work for making modifications to it. "Object code" means any non-source form of a work.

A "Standard Interface" means an interface that either is an official standard defined by a recognized standards body, or, in the case of interfaces specified for a particular programming language, one that is widely used among developers working in that language.

The "System Libraries" of an executable work include anything, other than the work as a whole, that (a) is included in the normal form of packaging a Major Component, but which is not part of that Major Component, and (b) serves only to enable use of the work with that Major Component, or to implement a Standard Interface for which an implementation is available to the public in source code form. A "Major Component", in this context, means a major essential component (kernel, window system, and so on) of the specific operating system (if any) on which the executable work runs, or a compiler used to produce the work, or an object code interpreter used to run it.

The "Corresponding Source" for a work in object code form means all the source code needed to generate, install, and (for an executable work) run the object code and to modify the work, including scripts to control those activities. However, it does not include the work's System Libraries, or general-purpose tools or generally available free programs which are used unmodified in performing those activities but which are not part of the work. For example, Corresponding Source includes interface definition files associated with source files for the work, and the source code for shared libraries and dynamically linked subprograms that the work is specifically designed to require, such as by intimate data communication or control flow between those subprograms and other parts of the work.

The Corresponding Source need not include anything that users can regenerate automatically from other parts of the Corresponding Source.

The Corresponding Source for a work in source code form is that same work.

2. Basic Permissions.

All rights granted under this License are granted for the term of copyright on the Program, and are irrevocable provided the stated conditions are met. This License explicitly affirms your unlimited permission to run the unmodified Program. The output from running a covered work is covered by this License only if the output, given its content, constitutes a covered work. This License acknowledges your rights of fair use or other equivalent, as provided by copyright law.

You may make, run and propagate covered works that you do not convey, without conditions so long as your license otherwise remains in force. You may convey covered works to others for the sole purpose of having them make modifications exclusively for you, or provide you with facilities for running those works, provided that you comply with the terms of this License in conveying all material for which you do not control copyright. Those thus making or running the covered works for you must do so exclusively on your behalf, under your direction and control, on terms that prohibit them from making any copies of your copyrighted material outside their relationship with you.

Conveying under any other circumstances is permitted solely under the conditions stated below. Sublicensing is not allowed; section 10 makes it unnecessary.

3. Protecting Users' Legal Rights From Anti-Circumvention Law.

No covered work shall be deemed part of an effective technological measure under any applicable law fulfilling obligations under article 11 of the WIPO copyright treaty adopted on 20 December 1996, or similar laws prohibiting or restricting circumvention of such measures.

When you convey a covered work, you waive any legal power to forbid circumvention of technological measures to the extent such circumvention is effected by exercising rights under this License with respect to the covered work, and you disclaim any intention to limit operation or modification of the work as a means of enforcing, against the work's users, your or third parties' legal rights to forbid circumvention of technological measures.

4. Conveying Verbatim Copies.

You may convey verbatim copies of the Program's source code as you receive it, in any medium, provided that you conspicuously and appropriately publish on each copy an appropriate copyright notice; keep intact all notices stating that this License and any non-permissive terms added in accord with section 7 apply to the code; keep intact all notices of the absence of any warranty; and give all recipients a copy of this License along with the Program.

You may charge any price or no price for each copy that you convey, and you may offer support or warranty protection for a fee.

5. Conveying Modified Source Versions.

You may convey a work based on the Program, or the modifications to produce it from the Program, in the form of source code under the terms of section 4, provided that you also meet all of these conditions:

- a) The work must carry prominent notices stating that you modified it, and giving a relevant date.
- b) The work must carry prominent notices stating that it is released under this License and any conditions added under section 7. This requirement modifies the requirement in section 4 to "keep intact all notices".
- c) You must license the entire work, as a whole, under this License to anyone who comes into possession of a copy. This License will therefore apply, along with any applicable section 7 additional terms, to the whole of the work, and all its parts, regardless of how they are packaged. This License gives no permission to license the work in any other way, but it does not invalidate such permission if you have separately received it.
- d) If the work has interactive user interfaces, each must display Appropriate Legal Notices; however, if the Program has interactive interfaces that do not display Appropriate Legal Notices, your work need not make them do so.

A compilation of a covered work with other separate and independent works, which are not by their nature extensions of the covered work, and which are not combined with it such as to form a larger program, in or on a volume of a storage or distribution medium, is called an "aggregate" if the compilation and its resulting copyright are not used to limit the access or legal rights of the compilation's users beyond what the individual works permit. Inclusion of a covered work in an aggregate does not cause this License to apply to the other parts of the aggregate.

6. Conveying Non-Source Forms.

You may convey a covered work in object code form under the terms of sections 4 and 5, provided that you also convey the machine-readable Corresponding Source under the terms of this License, in one of these ways:

- a) Convey the object code in, or embodied in, a physical product (including a physical distribution medium), accompanied by the Corresponding Source fixed on a durable physical medium customarily used for software interchange.
- b) Convey the object code in, or embodied in, a physical product (including a physical distribution medium), accompanied by a written offer, valid for at least three years and valid for as long as you offer spare parts or customer support for that product model, to give anyone who possesses the object code either (1) a copy of the Corresponding Source for all the software in the product that is covered by this License, on a durable physical medium customarily used for software interchange, for a price no more than your reasonable cost of physically performing this conveying of source, or (2) access to copy the Corresponding Source from a network server at no charge.
- c) Convey individual copies of the object code with a copy of the written offer to provide the Corresponding Source. This alternative is allowed only occasionally and noncommercially, and only if you received the object code with such an offer, in accord with subsection 6b.
- d) Convey the object code by offering access from a designated place (gratis or for a charge), and offer equivalent access to the Corresponding Source in the same way through the same place at no further charge. You need not require recipients to copy the Corresponding Source along with the object code. If the place to copy the object code is a network server, the Corresponding Source may be on a different server (operated by you or a third party) that supports equivalent copying facilities, provided you maintain clear directions next to the object code saying where to find the Corresponding Source. Regardless of what server hosts the Corresponding Source, you remain obligated to ensure that it is available for as long as needed to satisfy these requirements.
- e) Convey the object code using peer-to-peer transmission, provided you inform other peers where the object code and Corresponding Source of the work are being offered to the general public at no charge under subsection 6d.

A separable portion of the object code, whose source code is excluded from the Corresponding Source as a System Library, need not be included in conveying the object code work.

A "User Product" is either (1) a "consumer product", which means any tangible personal property which is normally used for personal, family, or household purposes, or (2) anything designed or sold for incorporation into a dwelling. In determining whether a product is a consumer product, doubtful cases shall be resolved in favor of coverage. For a particular product received by a particular user, "normally used" refers to a typical or common use of that class of product, regardless of the status of the particular user or of the way in which the particular user actually uses, or expects or is expected to use, the product. A product is a consumer product regardless of whether the product has substantial commercial, industrial or non-consumer uses, unless such uses represent the only significant mode of use of the product.

"Installation Information" for a User Product means any methods, procedures, authorization keys, or other information required to install and execute modified versions of a covered work in that User Product from a modified version of its Corresponding Source. The information must suffice to ensure that the continued functioning of the modified object code is in no case prevented or interfered with solely because modification has been made.

If you convey an object code work under this section in, or with, or specifically for use in, a User Product, and the conveying occurs as part of a transaction in which the right of possession and use of the User Product is transferred to the recipient in perpetuity or for a fixed term (regardless of how the transaction is characterized), the Corresponding Source conveyed under this section must be accompanied by the Installation Information. But this requirement does not apply if neither you nor any third party retains the ability to install modified object code on the User Product (for example, the work has been installed in ROM).

The requirement to provide Installation Information does not include a requirement to continue to provide support service, warranty, or updates for a work that has been modified or installed by the recipient, or for the User Product in which it has been modified or installed. Access to a network may be denied when the modification itself materially and adversely affects the operation of the network or violates the rules and protocols for communication across the network.

Corresponding Source conveyed, and Installation Information provided, in accord with this section must be in a format that is publicly documented (and with an implementation available to the public in source code form), and must require no special password or key for unpacking, reading or copying.

7. Additional Terms.

"Additional permissions" are terms that supplement the terms of this License by making exceptions from one or more of its conditions. Additional permissions that are applicable to the entire Program shall be treated as though they were included in this License, to the extent that they are valid under applicable law. If additional permissions apply only to part of the Program, that part may be used separately under those permissions, but the entire Program remains governed by this License without regard to the additional permissions.

When you convey a copy of a covered work, you may at your option remove any additional permissions from that copy, or from any part of it. (Additional permissions may be written to require their own removal in

certain cases when you modify the work.) You may place additional permissions on material, added by you to a covered work, for which you have or can give appropriate copyright permission.

Notwithstanding any other provision of this License, for material you add to a covered work, you may (if authorized by the copyright holders of that material) supplement the terms of this License with terms:

- a) Disclaiming warranty or limiting liability differently from the terms of sections 15 and 16 of this License; or
- b) Requiring preservation of specified reasonable legal notices or author attributions in that material or in the Appropriate Legal Notices displayed by works containing it; or
- c) Prohibiting misrepresentation of the origin of that material, or requiring that modified versions of such material be marked in reasonable ways as different from the original version; or
- d) Limiting the use for publicity purposes of names of licensors or authors of the material; or
- e) Declining to grant rights under trademark law for use of some trade names, trademarks, or service marks; or
- f) Requiring indemnification of licensors and authors of that material by anyone who conveys the material (or modified versions of it) with contractual assumptions of liability to the recipient, for any liability that these contractual assumptions directly impose on those licensors and authors.

All other non-permissive additional terms are considered "further restrictions" within the meaning of section 10. If the Program as you received it, or any part of it, contains a notice stating that it is governed by this License along with a term that is a further restriction, you may remove that term. If a license document contains a further restriction but permits relicensing or conveying under this License, you may add to a covered work material governed by the terms of that license document, provided that the further restriction does not survive such relicensing or conveying.

If you add terms to a covered work in accord with this section, you must place, in the relevant source files, a statement of the additional terms that apply to those files, or a notice indicating where to find the applicable terms.

Additional terms, permissive or non-permissive, may be stated in the form of a separately written license, or stated as exceptions; the above requirements apply either way.

8. Termination.

You may not propagate or modify a covered work except as expressly provided under this License. Any attempt otherwise to propagate or modify it is void, and will automatically terminate your rights under this License (including any patent licenses granted under the third paragraph of section 11).

However, if you cease all violation of this License, then your license from a particular copyright holder is reinstated (a) provisionally, unless and until the copyright holder explicitly and finally terminates your license, and (b) permanently, if the copyright holder fails to notify you of the violation by some reasonable means prior to 60 days after the cessation.

Moreover, your license from a particular copyright holder is reinstated permanently if the copyright holder notifies you of the violation by some reasonable means, this is the first time you have received notice of violation of this License (for any work) from that copyright holder, and you cure the violation prior to 30 days after your receipt of the notice.

Termination of your rights under this section does not terminate the licenses of parties who have received copies or rights from you under this License. If your rights have been terminated and not permanently reinstated, you do not qualify to receive new licenses for the same material under section 10.

9. Acceptance Not Required for Having Copies.

You are not required to accept this License in order to receive or run a copy of the Program. Ancillary propagation of a covered work occurring solely as a consequence of using peer-to-peer transmission to receive a copy likewise does not require acceptance. However, nothing other than this License grants you permission to propagate or modify any covered work. These actions infringe copyright if you do not accept this License. Therefore, by modifying or propagating a covered work, you indicate your acceptance of this License to do so.

10. Automatic Licensing of Downstream Recipients.

Each time you convey a covered work, the recipient automatically receives a license from the original licensors, to run, modify and propagate that work, subject to this License. You are not responsible for enforcing compliance by third parties with this License.

An "entity transaction" is a transaction transferring control of an organization, or substantially all assets of one, or subdividing an organization, or merging organizations. If propagation of a covered work results from an entity transaction, each party to that transaction who receives a copy of the work also receives whatever licenses to the work the party's predecessor in interest had or could give under the previous paragraph, plus a right to possession of the Corresponding Source of the work from the predecessor in interest, if the predecessor has it or can get it with reasonable efforts.

You may not impose any further restrictions on the exercise of the rights granted or affirmed under this License. For example, you may not impose a license fee, royalty, or other charge for exercise of rights granted under this License, and you may not initiate litigation (including a cross-claim or counterclaim in a lawsuit) alleging that any patent claim is infringed by making, using, selling, offering for sale, or importing the Program or any portion of it.

11. Patents.

A "contributor" is a copyright holder who authorizes use under this License of the Program or a work on which the Program is based. The work thus licensed is called the contributor's "contributor version".

A contributor's "essential patent claims" are all patent claims owned or controlled by the contributor, whether already acquired or hereafter acquired, that would be infringed by some manner, permitted by this License, of making, using, or selling its contributor version, but do not include claims that would be infringed only as a consequence of further modification of the contributor version. For purposes of this definition, "control" includes the right to grant patent sublicenses in a manner consistent with the requirements of this License.

Each contributor grants you a non-exclusive, worldwide, royalty-free patent license under the contributor's essential patent claims, to make, use, sell, offer for sale, import and otherwise run, modify and propagate the contents of its contributor version.

In the following three paragraphs, a "patent license" is any express agreement or commitment, however denominated, not to enforce a patent (such as an express permission to practice a patent or covenant not to sue for patent infringement). To "grant" such a patent license to a party means to make such an agreement or commitment not to enforce a patent against the party.

If you convey a covered work, knowingly relying on a patent license, and the Corresponding Source of the work is not available for anyone to copy, free of charge and under the terms of this License, through a publicly available network server or other readily accessible means, then you must either (1) cause the Corresponding Source to be so available, or (2) arrange to deprive yourself of the benefit of the patent license for this particular work, or (3) arrange, in a manner consistent with the requirements of this License, to extend the patent license to downstream recipients. "Knowingly relying" means you have actual knowledge that, but for the patent license, your conveying the covered work in a country, or your recipient's use of the covered work in a country, would infringe one or more identifiable patents in that country that you have reason to believe are valid.

If, pursuant to or in connection with a single transaction or arrangement, you convey, or propagate by procuring conveyance of, a covered work, and grant a patent license to some of the parties receiving the covered work authorizing them to use, propagate, modify or convey a specific copy of the covered work, then the patent license you grant is automatically extended to all recipients of the covered work and works based on it.

A patent license is "discriminatory" if it does not include within the scope of its coverage, prohibits the exercise of, or is conditioned on the non-exercise of one or more of the rights that are specifically granted under this License. You may not convey a covered work if you are a party to an arrangement with a third party that is in the business of distributing software, under which you make payment to the third party based on the extent of your activity of conveying the work, and under which the third party grants, to any of the parties who would receive the covered work from you, a discriminatory patent license (a) in connection with copies of the covered work conveyed by you (or copies made from those copies), or (b) primarily for and in connection with specific products or compilations that contain the covered work, unless you entered into that arrangement, or that patent license was granted, prior to 28 March 2007.

Nothing in this License shall be construed as excluding or limiting any implied license or other defenses to infringement that may otherwise be available to you under applicable patent law.

12. No Surrender of Others' Freedom.

If conditions are imposed on you (whether by court order, agreement or otherwise) that contradict the conditions of this License, they do not excuse you from the conditions of this License. If you cannot convey a covered work so as to satisfy simultaneously your obligations under this License and any other pertinent obligations, then as a consequence you may not convey it at all. For example, if you agree to terms that obligate you to collect a royalty for further conveying from those to whom you convey the Program, the only way you could satisfy both those terms and this License would be to refrain entirely from conveying the Program.

13. Use with the GNU Affero General Public License.

Notwithstanding any other provision of this License, you have permission to link or combine any covered work with a work licensed under version 3 of the GNU Affero General Public License into a single combined work, and to convey the resulting work. The terms of this License will continue to apply to the part which is

the covered work, but the special requirements of the GNU Affero General Public License, section 13, concerning interaction through a network will apply to the combination as such.

14. Revised Versions of this License.

The Free Software Foundation may publish revised and/or new versions of the GNU General Public License from time to time. Such new versions will be similar in spirit to the present version, but may differ in detail to address new problems or concerns.

Each version is given a distinguishing version number. If the Program specifies that a certain numbered version of the GNU General Public License “or any later version” applies to it, you have the option of following the terms and conditions either of that numbered version or of any later version published by the Free Software Foundation. If the Program does not specify a version number of the GNU General Public License, you may choose any version ever published by the Free Software Foundation.

If the Program specifies that a proxy can decide which future versions of the GNU General Public License can be used, that proxy's public statement of acceptance of a version permanently authorizes you to choose that version for the Program.

Later license versions may give you additional or different permissions. However, no additional obligations are imposed on any author or copyright holder as a result of your choosing to follow a later version.

15. Disclaimer of Warranty.

THERE IS NO WARRANTY FOR THE PROGRAM, TO THE EXTENT PERMITTED BY APPLICABLE LAW. EXCEPT WHEN OTHERWISE STATED IN WRITING THE COPYRIGHT HOLDERS AND/OR OTHER PARTIES PROVIDE THE PROGRAM “AS IS” WITHOUT WARRANTY OF ANY KIND, EITHER EXPRESSED OR IMPLIED, INCLUDING, BUT NOT LIMITED TO, THE IMPLIED WARRANTIES OF MERCHANTABILITY AND FITNESS FOR A PARTICULAR PURPOSE. THE ENTIRE RISK AS TO THE QUALITY AND PERFORMANCE OF THE PROGRAM IS WITH YOU. SHOULD THE PROGRAM PROVE DEFECTIVE, YOU ASSUME THE COST OF ALL NECESSARY SERVICING, REPAIR OR CORRECTION.

16. Limitation of Liability.

IN NO EVENT UNLESS REQUIRED BY APPLICABLE LAW OR AGREED TO IN WRITING WILL ANY COPYRIGHT HOLDER, OR ANY OTHER PARTY WHO MODIFIES AND/OR CONVEYS THE PROGRAM AS PERMITTED ABOVE, BE LIABLE TO YOU FOR DAMAGES, INCLUDING ANY GENERAL, SPECIAL, INCIDENTAL OR CONSEQUENTIAL DAMAGES ARISING OUT OF THE USE OR INABILITY TO USE THE PROGRAM (INCLUDING BUT NOT LIMITED TO LOSS OF DATA OR DATA BEING RENDERED INACCURATE OR LOSSES SUSTAINED BY YOU OR THIRD PARTIES OR A FAILURE OF THE PROGRAM TO OPERATE WITH ANY OTHER PROGRAMS), EVEN IF SUCH HOLDER OR OTHER PARTY HAS BEEN ADVISED OF THE POSSIBILITY OF SUCH DAMAGES.

17. Interpretation of Sections 15 and 16.

If the disclaimer of warranty and limitation of liability provided above cannot be given local legal effect according to their terms, reviewing courts shall apply local law that most closely approximates an absolute waiver of all civil liability in connection with the Program, unless a warranty or assumption of liability accompanies a copy of the Program in return for a fee.

END OF TERMS AND CONDITIONS

5 Customer Support

Technical support – where and when you need it

For quick, expert help with any Rohde & Schwarz equipment, contact one of our Customer Support Centers. A team of highly qualified engineers provides telephone support and will work with you to find a solution to your query on any aspect of the operation, programming or applications of Rohde & Schwarz equipment.

Up-to-date information and upgrades

To keep your instrument up-to-date and to be informed about new application notes related to your instrument, please send an e-mail to the Customer Support Center stating your instrument and your wish. We will take care that you will get the right information.

Europe, Africa, Middle East

Phone +49 89 4129 12345

customersupport@rohde-schwarz.com

North America

Phone 1-888-TEST-RSA (1-888-837-8772)

customer.support@rsa.rohde-schwarz.com

Latin America

Phone +1-410-910-7988

customersupport.la@rohde-schwarz.com

Asia/Pacific

Phone +65 65 13 04 88

customersupport.asia@rohde-schwarz.com